

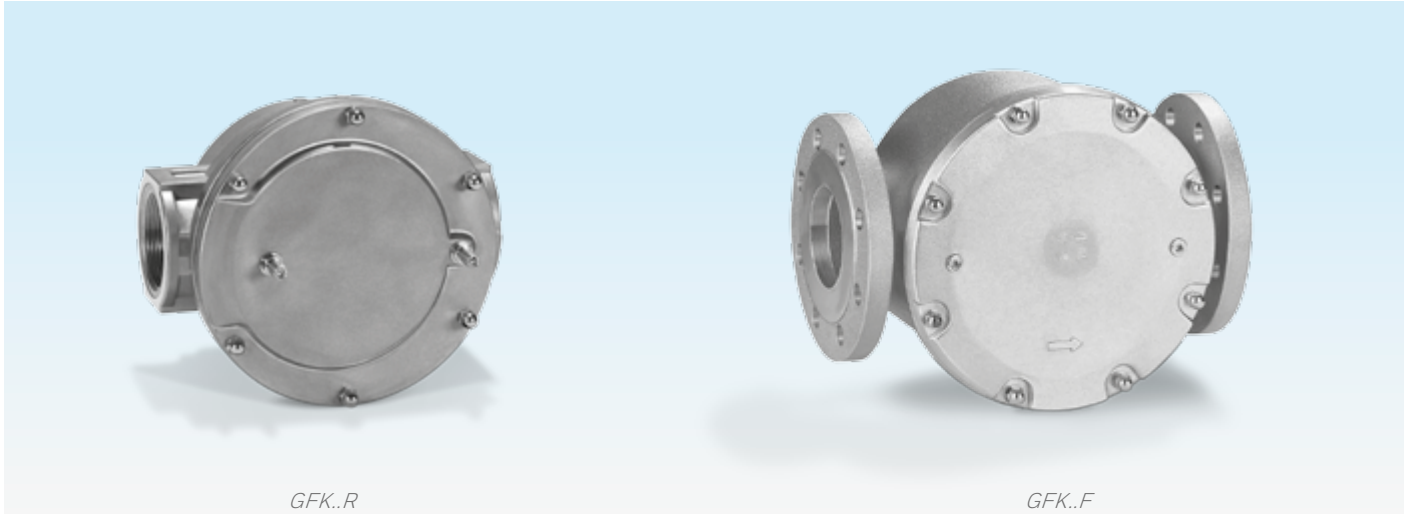
---

GFK

---

## CE Gas filters

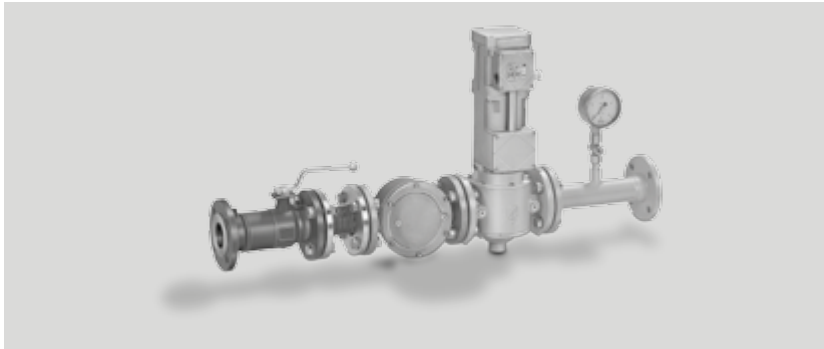
- For the protection of downstream devices against blockage
- Very high throughput
- High purification efficiency
- Long service life
- Easy-to-replace filter pad
- EC type-tested and certified



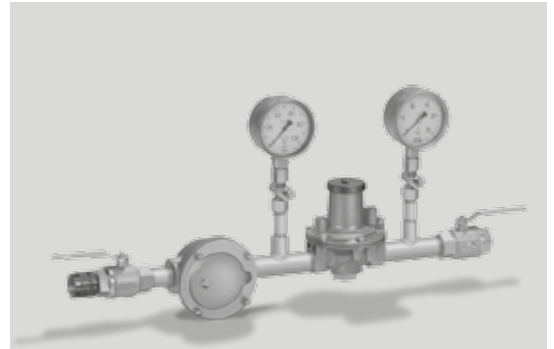
## Application

Suitable for filtration of the fuel gas and combustion air supply to all gas consuming appliances.

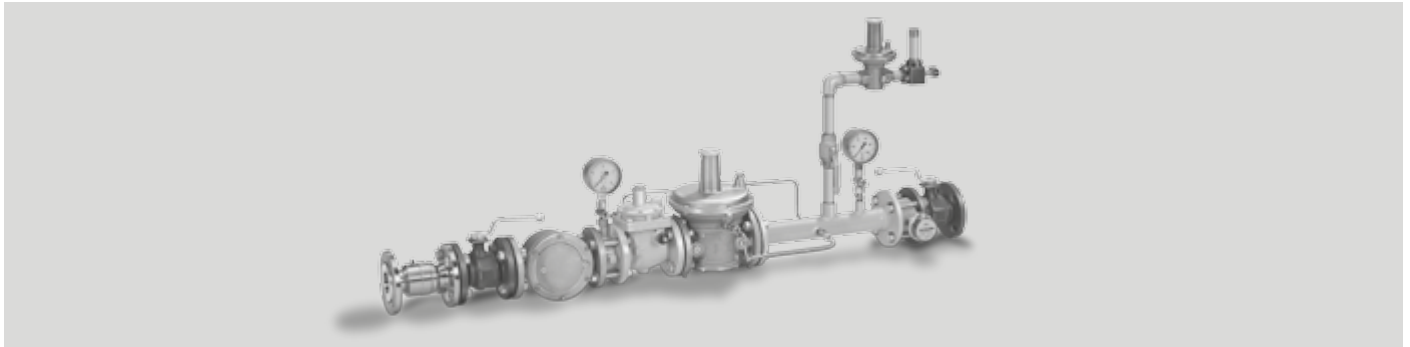
## Application examples



*Main gas shut-off device with GFK..F*



*Pressure control system with GFK..R*



*Gas pressure control system with GFK..F*

## Selection

### Standard-range

	10	40	60	-3	-6
GFK 15R	●	●			●
GFK 20R	●	●			●
GFK 25R	●	●			●
GFK 32R	●	●			●
GFK 40R	●	●			●
GFK 50R	●	●			●
GFK 65R	●	●			●
GFK 40F	●		●		●
GFK 50F	●		●		●
GFK 65F	●		●		●
GFK 80F	●		●		●
GFK 100F	●		●		●
GFK 125F	●	●		●	
GFK 150F	●	●		●	
GFK 200F	●			●	
GFK 250F	●			●	

### Order example

GFK 32R10-6

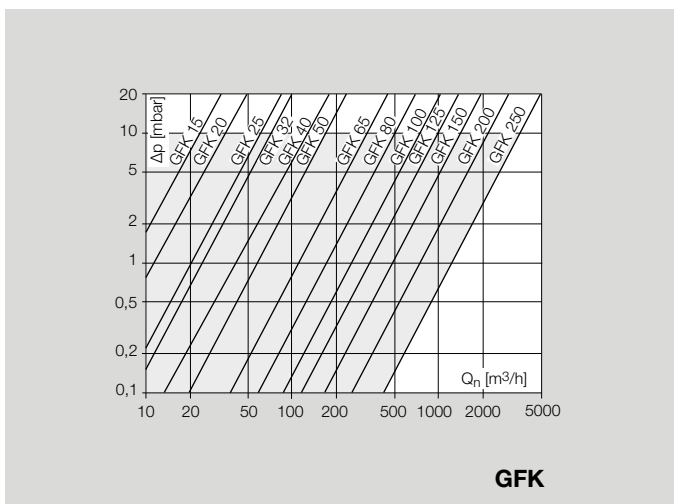
### T-Product range

	N	A	40	-3
GFK 15T	●		●	●
GFK 20T	●		●	●
GFK 25T	●		●	●
GFK 40T	●		●	●
GFK 50T	●	●	●	●
GFK 65T	●	●	●	●
GFK 80T		●	●	●
GFK 100T		●	●	●

### Order example

GFK 40TN40-3

### Flow rate



## Technical data

Gas type:  
natural gas, town gas, LPG (gaseous),  
biologically produced methane and air.

Max. inlet pressure  $p_u$ :  
1 bar GFK 15 to 250,  
4 bar (60 psig) GFK 15R to 65R,  
GFK 15TN to 100TN,  
6 bar GFK 40F to 100F.

Ambient temperature:  
-15 to +80°C (5 to 176°F).

Continuous operation at high temperatures ac-  
celerates the ageing of elastomer materials.

## Version to DIN 3386

### Housing

GFK 15 to 100 made from AlSi.

GFK 125 to 250 made from sheet steel.

GFK..R: Rp internal thread connection to ISO 7-1.

GFK..F:  
flanged connection to ISO 7005,  
PN 16.

GFK..N: NPT internal thread.

GFK..A: ANSI 150 flanged connection.

Filter pad: polypropylene fleece (standard 50  
 $\mu\text{m}$ ).

### Pressure test points on the cover

GFK 15 to 100:

Inlet side: Rp 1/8 pressure test nipple,  
Outlet side: Rp 1/8 pressure test nipple.

GFK 125 to 250:

Inlet side: Rp 1/8 plug,  
Outlet side: Rp 1/8 plug.

GFK 15T to 100T:

Inlet side: Rp 1/8 plug,  
Outlet side: Rp 1/8 plug.

## Maintenance cycles

Change filter pad once per annum, twice per  
annum for biologically produced methane, or  
in case the pressure differential on the gas fil-  
ter has risen by 100% compared to when new,  
 $\Delta p_{\text{max}} = 20 \text{ mbar}$ .

### Contact

[www.kromschroeder.com](http://www.kromschroeder.com) → Process Heat → Sales  
Elster GmbH  
Strothweg 1 · 49504 Lotte (Büren)  
Germany  
Tel. +49 541 1214-0  
[info@kromschroeder.com](mailto:info@kromschroeder.com)  
[www.kromschroeder.com](http://www.kromschroeder.com)

### Technical Information bulletin for this product

[www.docuthek.com](http://www.docuthek.com)  
Search term: GFK

We reserve the right to make  
technical modifications in the  
interests of progress.  
Copyright © 2016 Elster GmbH  
All rights reserved.

**Honeywell**  
**krom  
schroder**